

Mr. Polley
PolleyTechBMCHSD.weebly.com

Technology 8

03/11/15

BYOD

HW

Aim- How can you be creative in Autodesk?

Do Now: Log in, take out your notebook and something to write with, write down the AIM. Open 8 Tech Per 3 Even, check your status. Make sure you are in Google classroom.

Mr. Polley
PolleyTechBMCHSD.weebly.com

Technology 8

03/13/15

BYOD

Extra Help next week M,W,F

HW watch or go to <http://www.cnet.com/news/robert-downey-jr-gives-7-year-old-3d-printed-iron-man-arm/> What is the article about? Who is involved (companies also) How was the donated item created? 3/18

Aim- Sketching and creating from paper to computers.

Do Now: Log in, take out your notebook and something to write with, write down the AIM. Open 8 Tech Per 3 Even, check your status. Make sure you are in Google classroom.

Still missing 4 people.

A toy block with 6 sides of shapes.
20 points- Create a 4"x4"x4" Block
80 points- Each side will have a drawing.



10 pts. Paper sketch of all 6 sides

10 pts. Create a 4"x4"x4" cube in Autodesk save it filename First initial last name Alpha bloc

Ex. JSmith Alpha Bloc email it to me

20 points Block paper sketch & Inventor file due today

80 points YName Alpha Bloc

20 pts- Border on each side .375", inset .25"

60 pts- 3-6 drawings, Every side has a sketch

End Date 3/27 if everyone is done and all work is completed bagel breakfast 3/31 or 4/2.


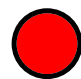
|



60 pts- 3-6 drawings

10 pts- All sides have a shape

If you create only 3 shapes then you must match the shapes symmetrically (Front-Back, Top-Bottom, L-Side-R-Side)

15 pts- Shapes must have depth (thickness)

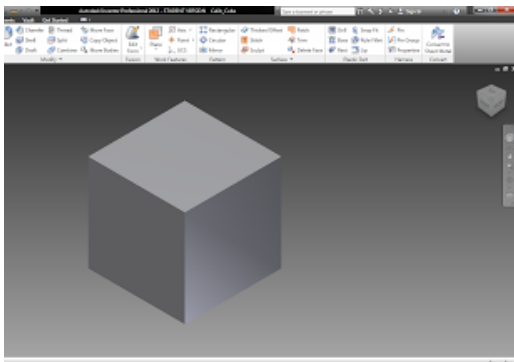
10 pts- 1 shape must have curves  

10 pts- 1 shape must have 2 corners $>/< 90$ deg.  

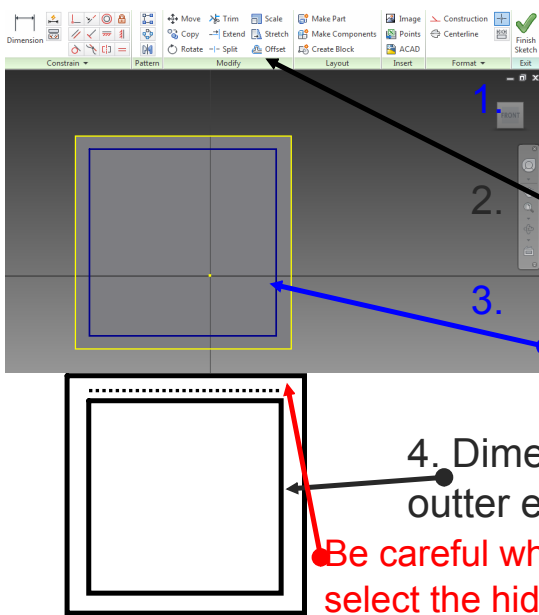
5 pts- 3 different colors

10 pts- Block finished by 3/25 Printed by 3/27

End Date 3/31



1. 2-D Sketch Create 4"x4" Square
 - A) Select 2 pt rectangle, then set dimensions to 4", Finish sketch
2. Extrude 4"
3. File save as YName Alpha Bloc Email it to JPolley@BMCHSD.org



Create borders on each side

1. Select 2D sketch then select a face (view)

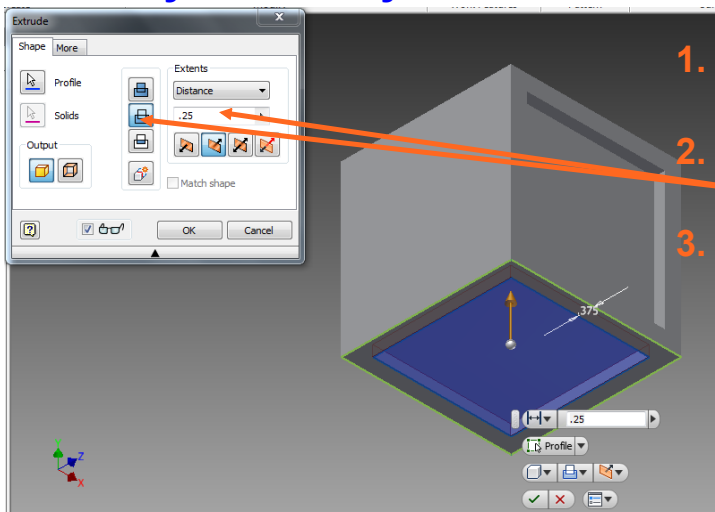
2. Select Offset- it towards the right in the ribbon bar.

3. Select the outer edge then size the box inside the box. Click once to release the square in close to the correct size.

4. Dimension the space between the outer edge and the inner box to .375

Be careful when you work other sides. You may accidentally select the hidden surface instead of the outer edge.

After you finish your 2-D Sketch you need to extrude.



1. Select extrude, then select the inner square.
2. Select cut and set the distance to .25"
3. Select ok

Mr. Polley
PolleyTechBMCHSD.weebly.com

Technology 8

03/19/15

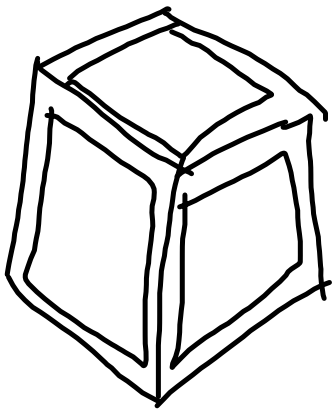
BYOD

Extra Help next week M,W,F

HW 2 due Monday 3/23 find a YouTube video on creating a shape in Autodesk Inventor.

Aim- Copying and do only what you need to, or creating something uniquely your own.

Do Now: Log in, take out your notebook and something to write with, write down the AIM. Open Autodesk Inv., Position lid 30 deg. from horizontal plane. Close mouths, face screen, and relax.



Inset a square panel

.25"

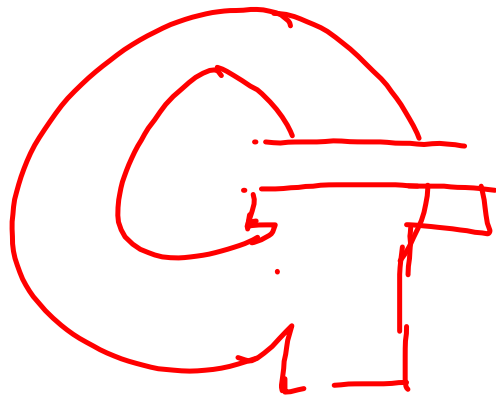
1) 2D Sketch 2pt rect.

2) Dimension

shape

.375" from each edge

Or Set the size of the Sq.



Mr. Polley
PolleyTechBMCHSD.weebly.com

Technology 8

03/23/15

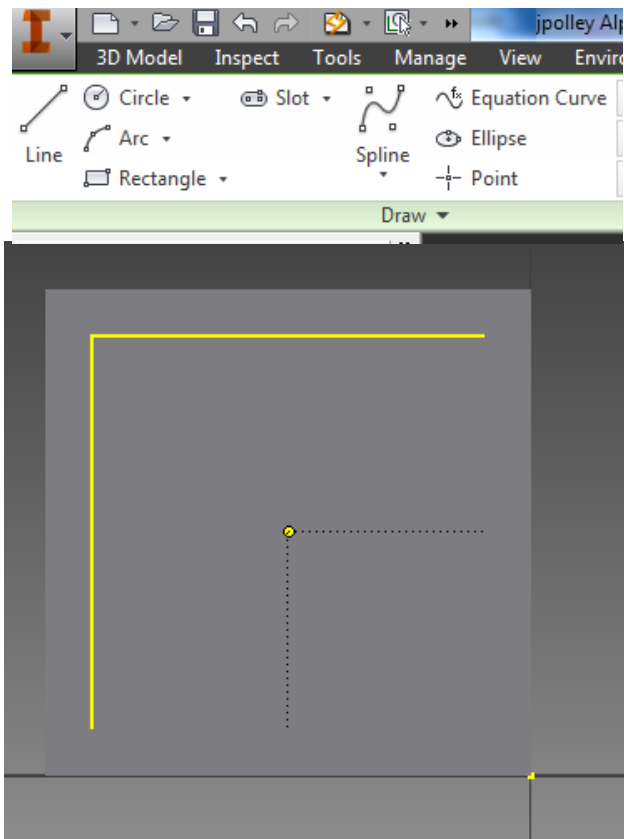
BYOD

Extra Help next week M,Tue,F

HW 2 due Monday 3/23 find a YouTube video on creating a shape in Autodesk Inventor.

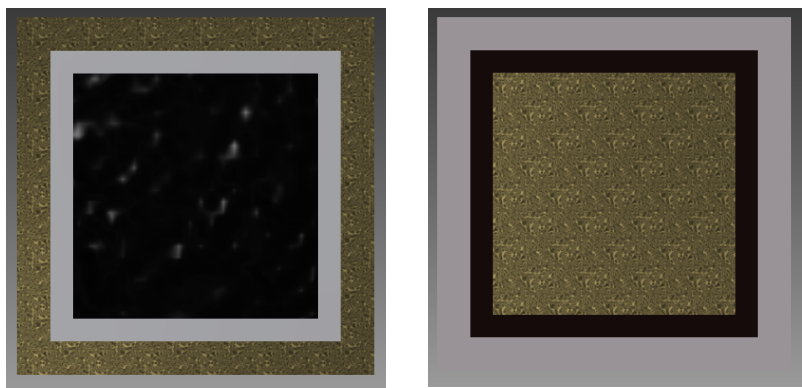
Aim- Be aware of the surface you are working on. If you are detailing a shape be on the surface of that shape.

Do Now: Log in, take out your notebook and something to write with, write down the AIM. Open Autodesk Inv., Position lid 30 deg. from horizontal plane. Close mouths, face screen, and relax.



In the 2-D Sketch ribbon panel you have all the tools you need to create. Using the circle, rectangle, and line tools will give you the basics needed create the 3 required shapes.

To help with object placement dashed lines appear to show the center point, horizontally and vertically.



The better you contrast the colors the more an object will stand out.

Mr. Polley
PolleyTechnical.com

Technology 8

03/27/15

BYOD

HW check my website, remind and/or your Gmail for an update

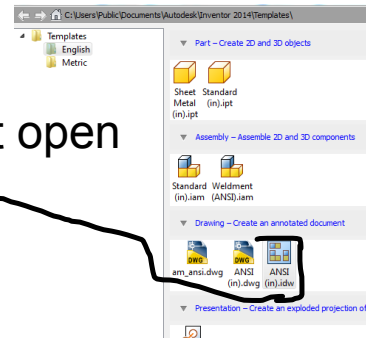
Extra Work next this week Friday

Aim- Printing in Autodesk part 2.

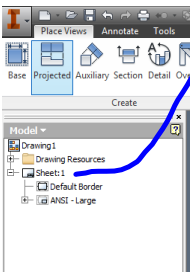
Do Now: Log in, take out your notebook and something to write with, write down the AIM. Open Autodesk Inv., Email the Alpha Bloc to me [The latest one] if did not do so on Monday. When you finish position laptop lid 30 deg. from horizontal plane. Close mouths, face screen, and relax.

Setting up a sheet to print.

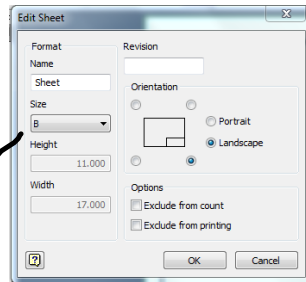
1. Have the block you want to print open
2. Create New Drawing ANSI .idw



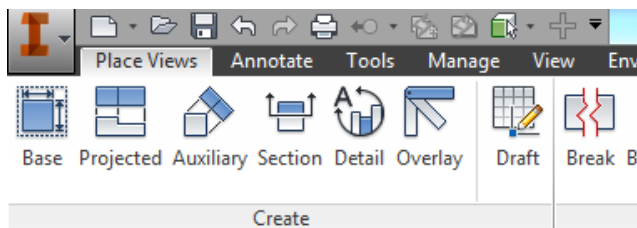
Right click sheet
Select Edit Sheet

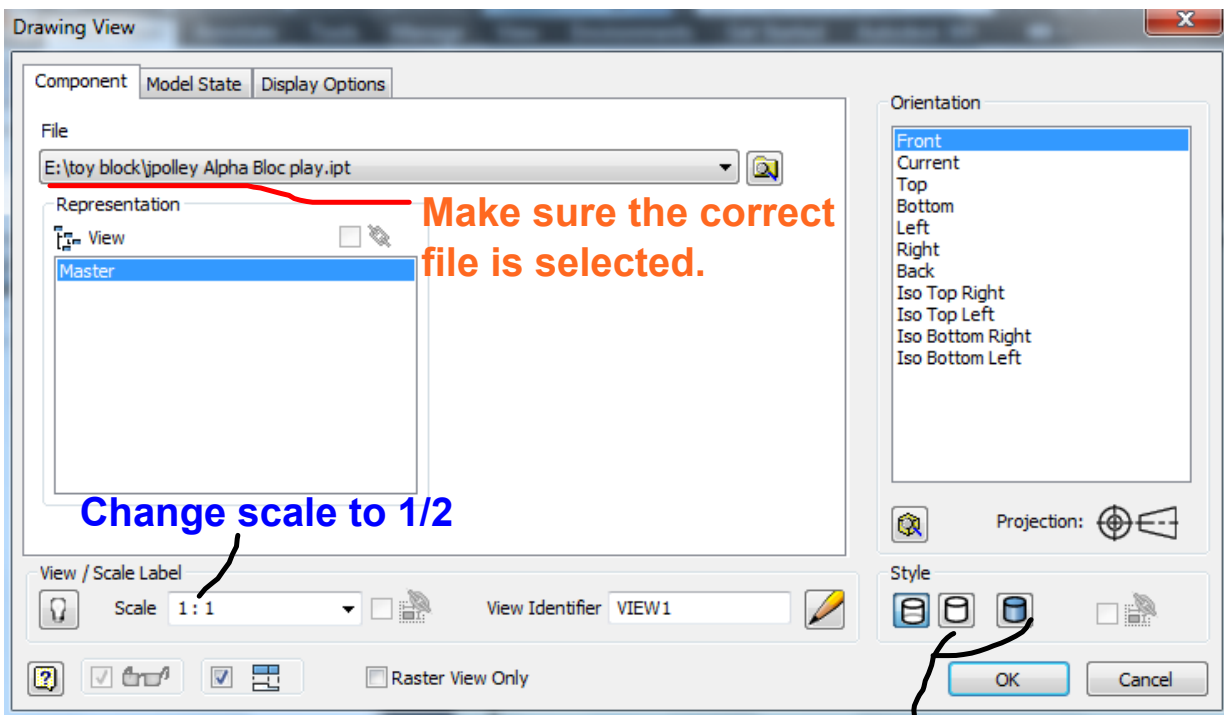


In the edit sheet box
make sure size is B,
11"x17". Select OK



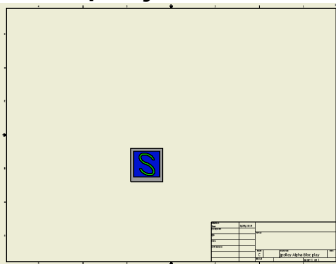
1. Select Base
2. Change settings



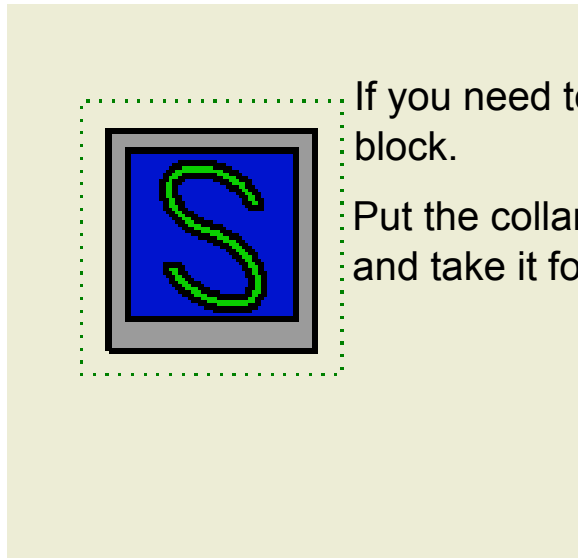
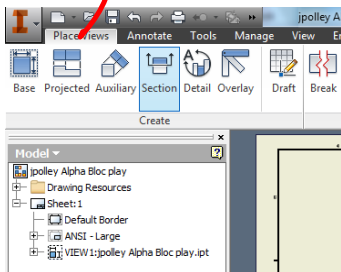


Select the 2 right drums then click on the page.

When you click on the page try to do so in the center of the page so you can project the views around the block.

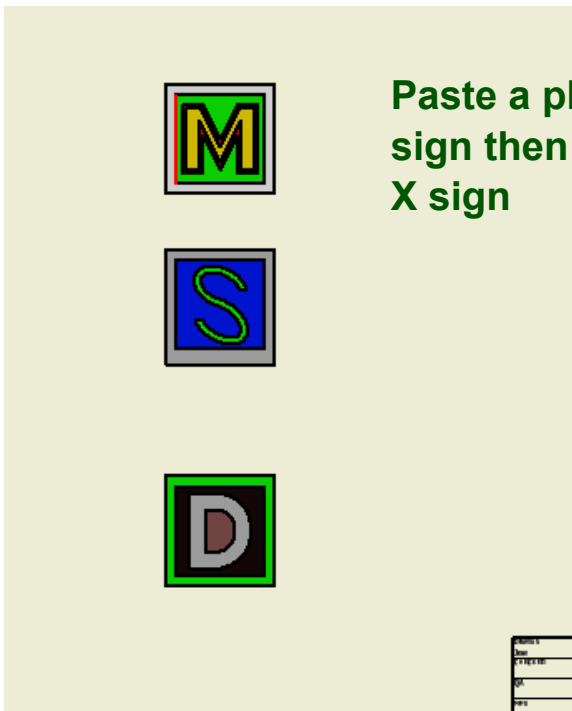


Select projected



If you need to recenter the block.

Put the collar on the dog and take it for a walk



Paste a plus sign then an X sign

NAME
DATE
PER
PR

Attachments

curved-lattice-shape.svg