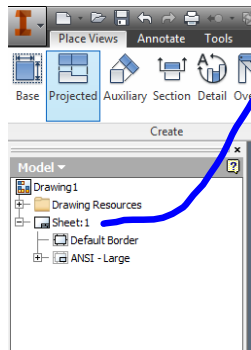
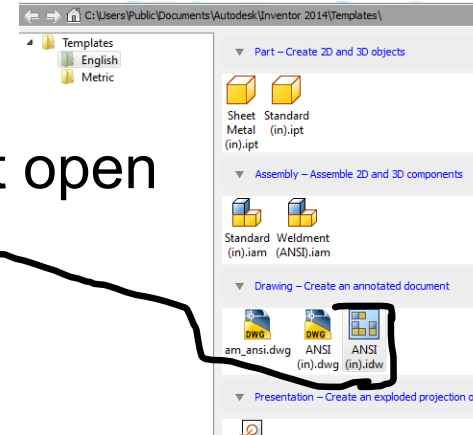


# Setting up a sheet to print.

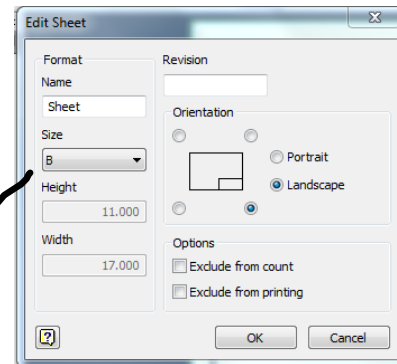
1. Have the block you want to print open
2. Create New Drawing ANSI .idw



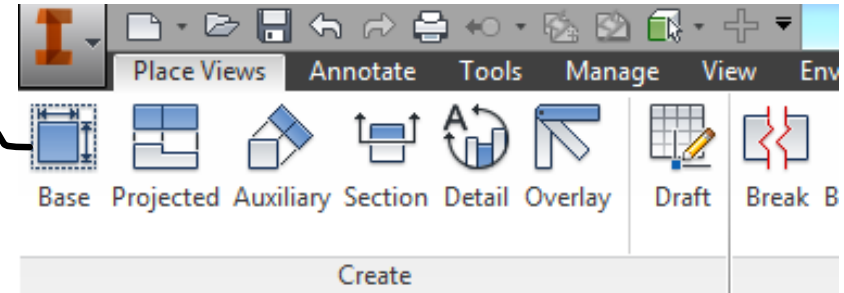
Right click sheet

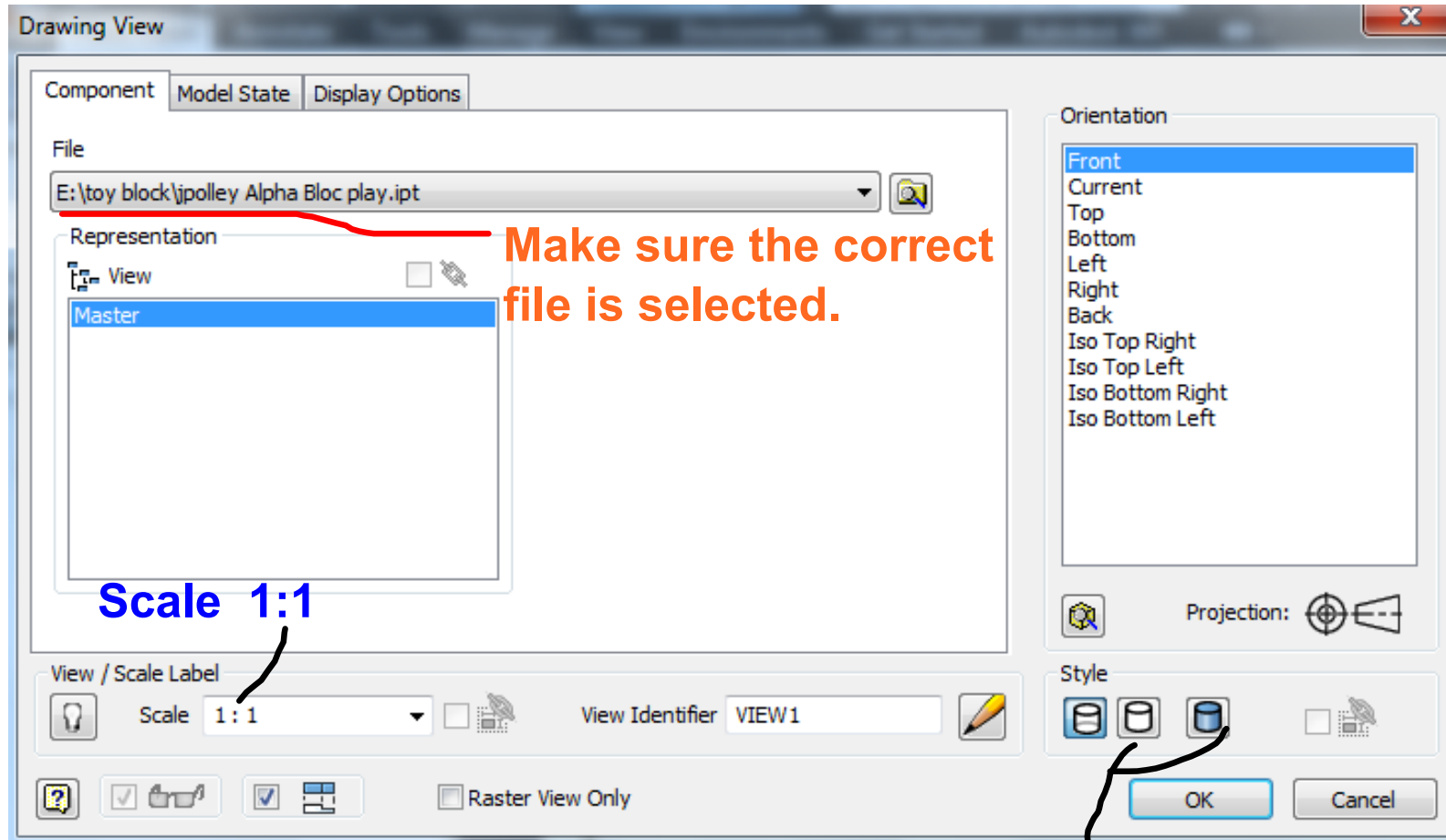
Select Edit Sheet

In the edit sheet box make sure size is B, 11"x17". Select OK



1. Select Base
2. Change settings



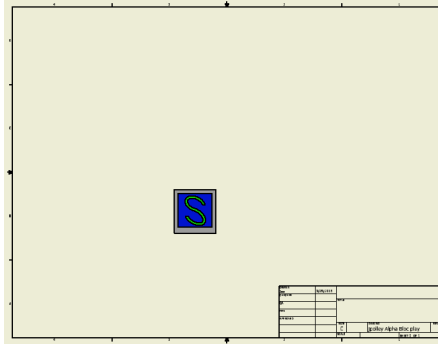


Make sure the correct file is selected.

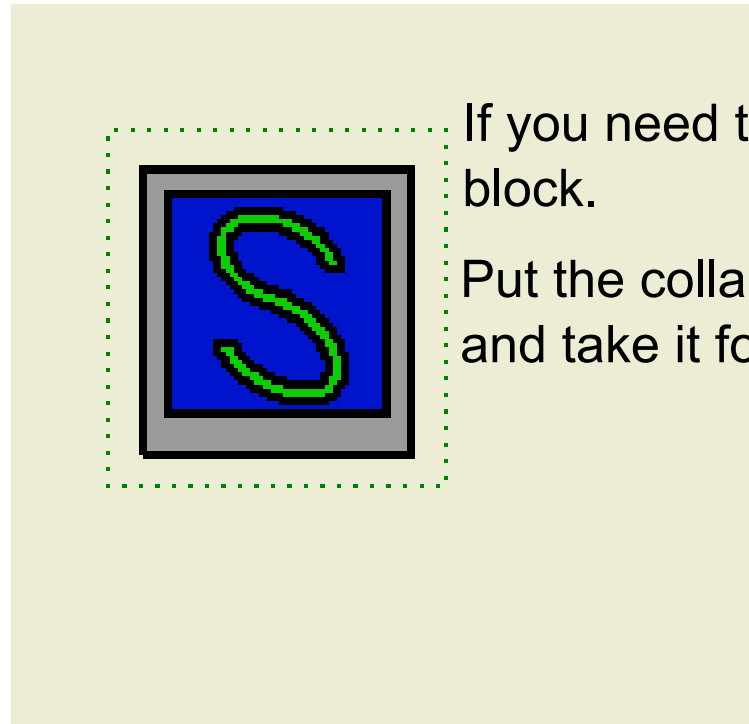
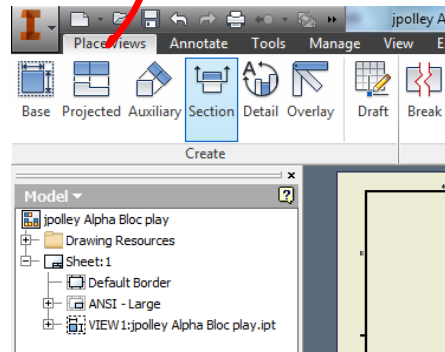
Scale 1:1

Select the 2 right drums then click on the page.

When you click on the page try to do so in the center of the page so you can project the views around the block.



Select projected



If you need to recenter the block.

Put the collar on the dog and take it for a walk

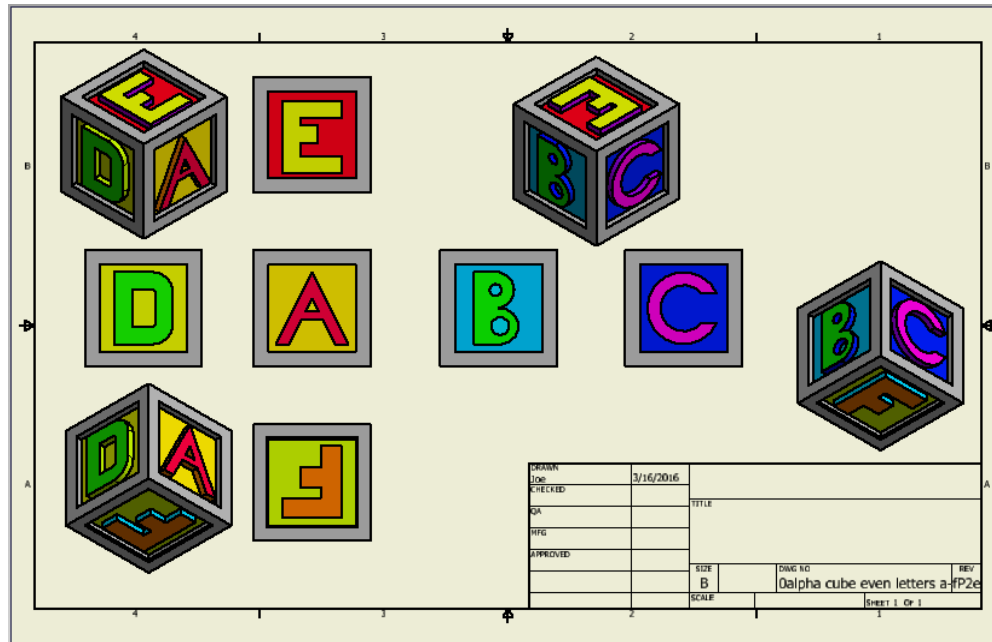


Paste a plus  
sign then an  
X sign



NAME
DATE
PERIOD
BY
PP

Your .IDW should 6 views and 4 isometrics



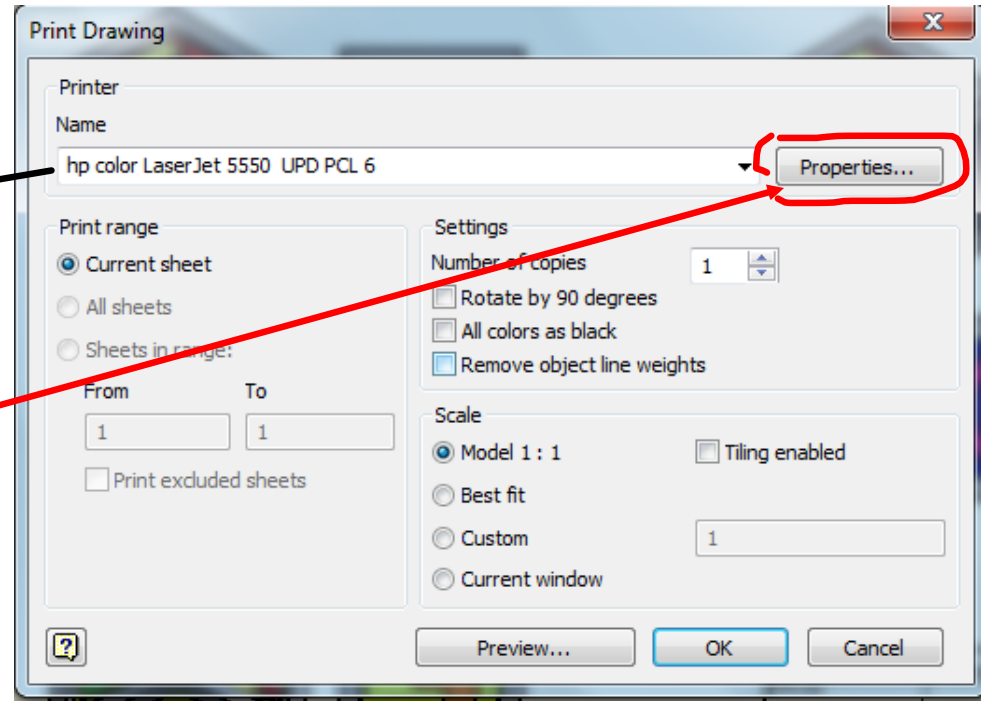
Isometrics must include 2 bottom and 2 back

Do not print unless your IDW has all the requirements

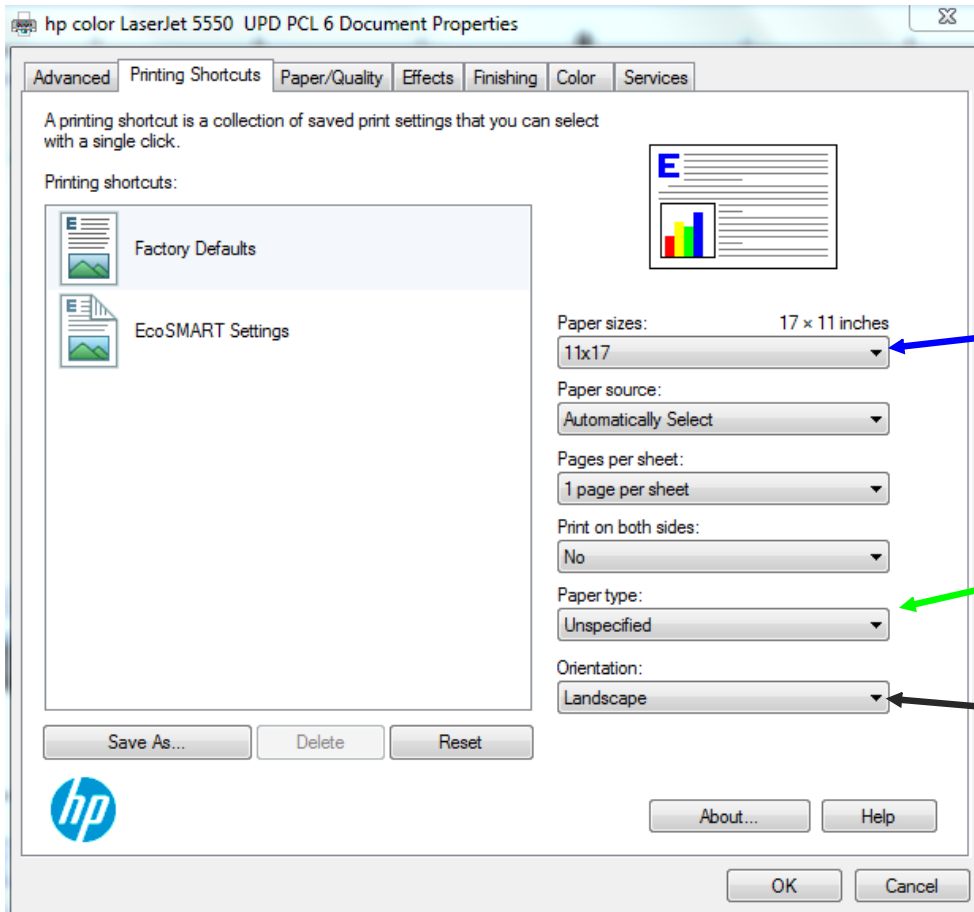
n To print go to  menu select print.

Change printer to HP  
color LaserJet 5500 (may  
say room 139)

Then change properties



# Properties Menu



Change paper size to 11x17

Paper Type- Plain

Orientation- Landscape

**IF THESE ARE NOT SET  
AND YOU PRINT YOU  
WILL LOSE 5 POINTS.**

Then click ok and ok



## Attachments

---

curved-lattice-shape.svg